

TESSUTO IGNIFUGO - ARTICOLO GRID - CATEGORIA E

COMPOSIZIONE: 100% PP FR
LAVABILE A 30°
NON CANDEGGIARE
NON STIRARE
LAVABILE A SECCO
NON ADATTO ALL'ASCIUGATRICE

350 GR/M² ±5%
RESISTENZA AL PILLING: 4/5
RESISTENZA ALL'ABRASIONE: > 50.000 MARTINDALE
SOLIDITÀ DELLE TINTE ALLA LUCE: 4-5

RESISTENZA AL FUOCO:
UNI 9175 CLASSE 1 IM
EN 1021 PART 1-2
BS 5852-1 PART I
NF D 60-013:06 (ART. AM 18)
CALIFORNIA TB: 117 2013
IMO - FTP CODE 307 PART 8

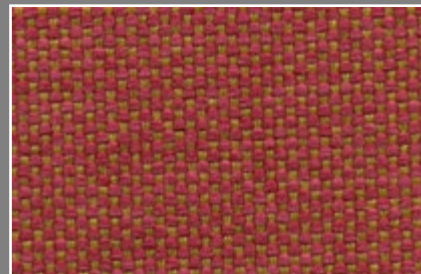
MorbidLine
SALOTTI



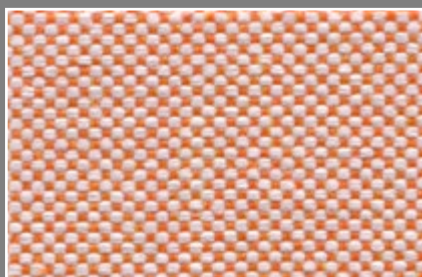
303



302



304



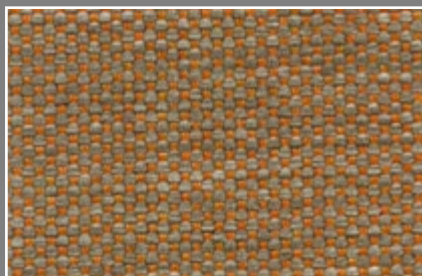
309



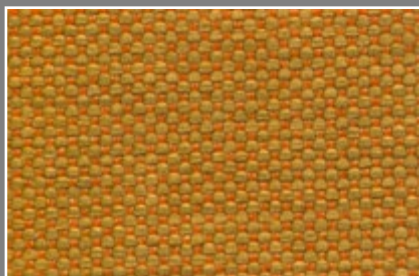
307



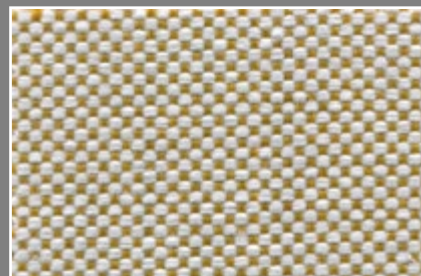
311



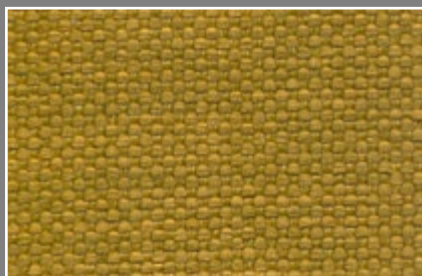
308



310



501



500



503



400



401



402



803

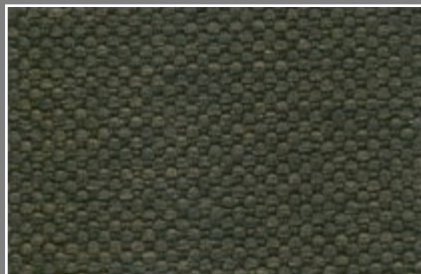
TESSUTO IGNIFUGO - ARTICOLO GRID - CATEGORIA E

COMPOSIZIONE: 100% PP FR
LAVABILE A 30°
NON CANDEGGIARE
NON STIRARE
LAVABILE A SECCO
NON ADATTO ALL'ASCIUGATRICE

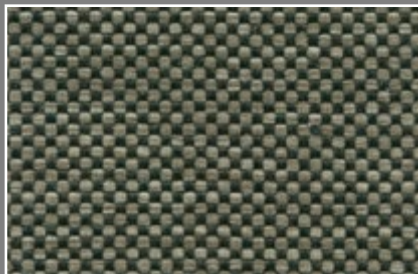
350 GR/M² ±5%
RESISTENZA AL PILLING: 4/5
RESISTENZA ALL'ABRASIONE: > 50.000 MARTINDALE
SOLIDITÀ DELLE TINTE ALLA LUCE: 4-5

RESISTENZA AL FUOCO:
UNI 9175 CLASSE 1 IM
EN 1021 PART 1-2
BS 5852-1 PART I
NF D 60-013:06 (ART. AM 18)
CALIFORNIA TB: 117 2013
IMO - FTP CODE 307 PART 8

MorbidLine
SALOTTI



404



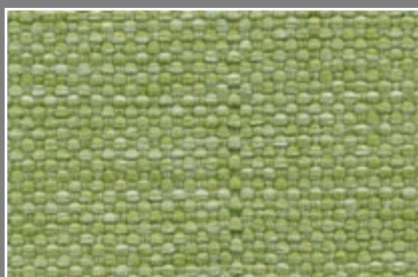
403



102



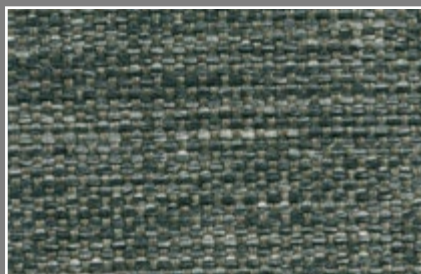
801



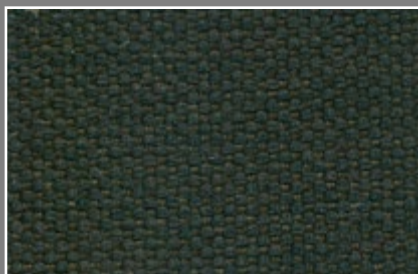
800



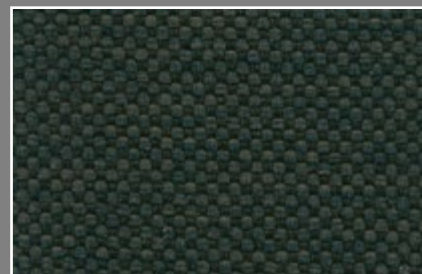
601



407



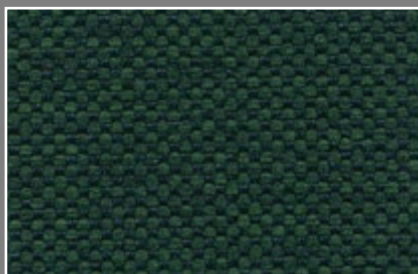
406



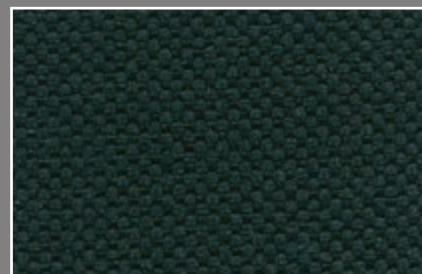
405



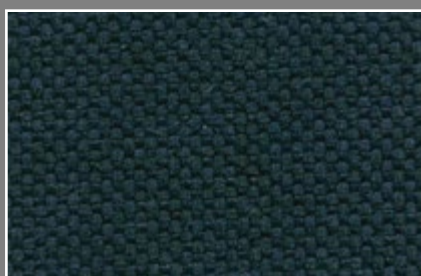
203



703



200



702



701



706

TESSUTO IGNIFUGO - ARTICOLO GRID - CATEGORIA E

COMPOSIZIONE: 100% PP FR
LAVABILE A 30°
NON CANDEGGIARE
NON STIRARE
LAVABILE A SECCO
NON ADATTO ALL'ASCIUGATRICE

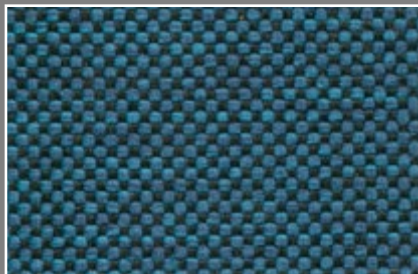
350 GR/M² ±5%
RESISTENZA AL PILLING: 4/5
RESISTENZA ALL'ABRASIONE: > 50.000 MARTINDALE
SOLIDITÀ DELLE TINTE ALLA LUCE: 4-5

RESISTENZA AL FUOCO:
UNI 9175 CLASSE 1 IM
EN 1021 PART 1-2
BS 5852-1 PART I
NF D 60-013:06 (ART. AM 18)
CALIFORNIA TB: 117 2013
IMO - FTP CODE 307 PART 8

MorbidLine
SALOTTI



700



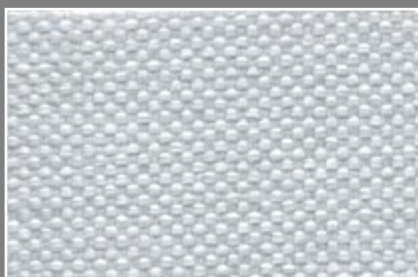
705



600



101



111



001



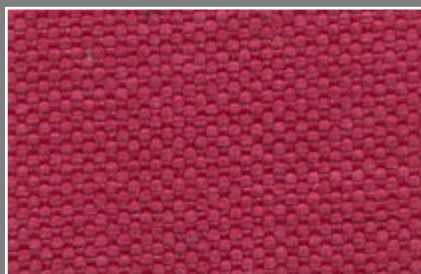
901



900



301



300



305



306